

AF-41 ALUMINUM DRAINAGE (FLAP) GATES

- LIGHTER WEIGHT REDUCES INSTALLATION COSTS
- SIZES 12" - 84" (CUSTOM SPIGOT SIZES AVAILABLE)
- SEATING HEADS TO 40 FEET.

A CORROSION-RESISTANT RUST-PROOF AUTOMATIC DRAINAGE GATE DESIGNED FOR USE WITH ALUMINUM CORRUGATED PIPE, OR FOR FLANGE MOUNTING OR USE WITH HDPE

PREVENTS ELECTROLYSIS ASSOCIATED WITH CAST IRON GATES TO ALUMINUM PIPE CONNECTIONS.

J-BULB NEOPRENE ADJUSTABLE SEATS PROVIDE EXCELLENT SEALING AGAINST RETURN FLOW.

FRAME, COVER, RETAINER RING, HINGE ARM, AND PIVOT LUG ARE OF ALUMINUM ALLOY 6061-T6. GATE HARDWARE IS STAINLESS STEEL.

- SPECIFY:
 - AF-41sb... for corrugated pipe
 - AF-41f... for wall mounting
 - AF-41ff... for flange mounting
 - AF-41-4... for plastic pipe
 - AF-41-6... for HDPE

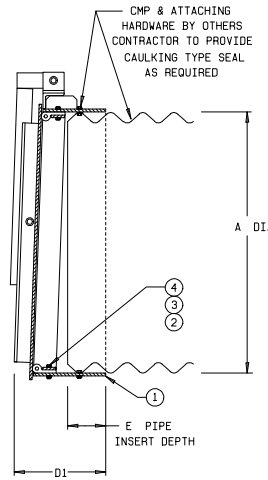
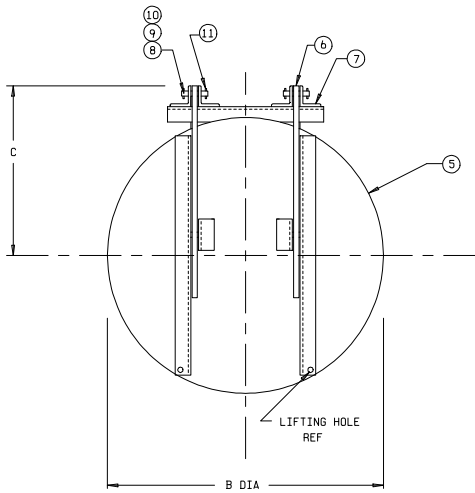


AF-41 FLATBACK

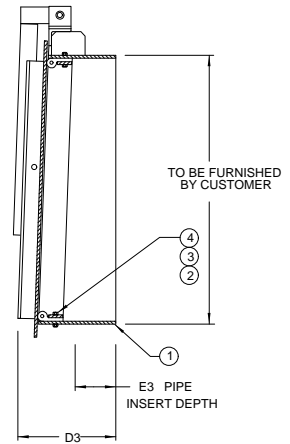


AF-41 SPIGOTBACK

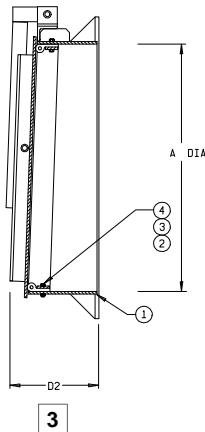
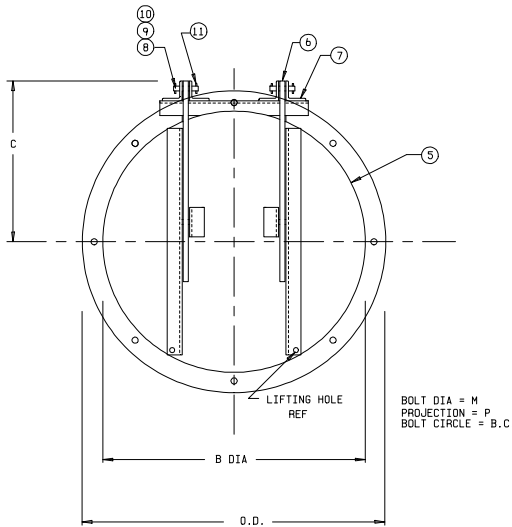
AF-41 SPIGOTBACK



AF-41 TYPE 6 SPIGOT FOR HDPE PIPE

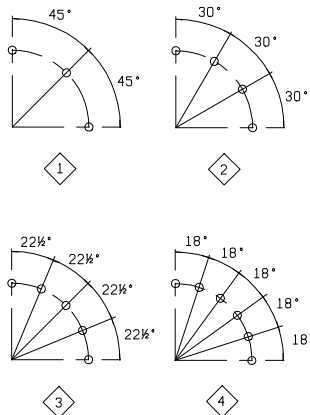


AF-41 FLATBACK (FLANGEBACK SIMILAR BUT WITH ASA STANDARD FLANGE DIMENSIONS)



PARTS LIST	
No.	Name
1	Frame
2	Seat
3	Retainer Ring
4	Hex Hd. Bolt/Nut
5	Cover
6	Hinge Arm
7	Pivot Lug
8	Hex Hd. Bolt/Nut
9	Hinge Pin
10	Bushing
11	Washer
12	Spring Pin

1. Add grout pad thickness to anchor bolt projection.
2. Also available with flange and drilling to attach to a 125# standard pipe flange.
3. If grout pad mounting is used add grout thickness to dimension.



DIMENSIONS IN INCHES														
GATE SIZE	A	B	C	D1	D2	D3	E	E3	O.D.	B.C.	M	P	1	à
12	13½	13½	10¼	8¾	8¾	11½	4	7	17½	15¼	½	1	1	
15	16½	17	12¼	8¾	8¾	11½	4	7	20½	18¼	½	1	2	
18	19½	20	14¼	8¾	8¾	11½	4	7	23½	21¼	½	1	2	
24	25½	26½	16¾	8¾	8¾	11½	4	7	30½	28¼	½	1½	2	
30	31½	32½	19¾	10½	10½	12	4½	7	36½	34¼	½	1½	3	
36	37½	38½	24	10¼	10½	12	4½	7½	42½	40¼	½	1½	3	
42	43½	46	28	13	13½	-	5½	-	48½	46¼	½	1½	3	
48	49½	52	31	13¾	13¾	-	5½	-	54½	52¼	½	1½	4	
54	55½	58	35	13¼	13¾	-	6½	-	60½	58¼	¾	2	4	
60	61½	64	38	15¼	15¾	-	6½	-	66½	64¼	¾	2	4	
72	73½	76	44½	17¾	17¾	-	7¼	-	78½	76¼	¾	2	4	
84	DIMENSIONS ON APPLICATION													